

AVALON
GRANDÉ



Discover the Vision of Luxurious Living

Central to Avalon Grande's vision is the concept of biophilic living, where every aspect of the design fosters a deep connection with nature. Featuring lush greenery, serene walking paths, and spaces for meditation and reflection, ideal for those seeking a retreat from the hustle of urban life.

Envision yourself waking up to the beauty of lush greenery, as gentle breezes whisper through serene walking paths. Picture spaces where meditation flows effortlessly, and quiet retreats allow you to escape the chaos of city life.

02 / AVALON
GRANDÉ





At Avalon Grande, we bring this vision to life with biophilic living at its core. Every element of our design fosters harmony and balance, offering a sanctuary for those seeking a meaningful connection with nature.


AVALON / 03
GRANDÉ

Step Into Avalon Boulevard

Where your journey through Avalon Grande begins. This elegant, tree-lined avenue leads you past lush central islands to a breathtaking roundabout.



AVALON / 05
GRANDÉ

A photograph of a modern building at night. The building has a light-colored facade and many windows, some of which are illuminated from within. A large, mature tree with a thick trunk and dense green foliage is in the foreground on the right side, its branches extending across the top of the frame. The tree's shadow is cast onto the building's facade. In the background, another taller building with many lit windows is visible. A road with a white car driving away is in the lower right. The overall scene is lit with warm, ambient light from the building and streetlights, creating a sophisticated and modern atmosphere.

At its heart stands the iconic *Acacia abyssinica*,
a proud symbol of Africa's natural beauty and strength

06 / AVALON
GRANDÉ



AVALON / 07
GRANDÉ

Feel the pulse of nature's beats gently, inviting you to pause and breathe at the Avalon Zen Garden

Imagine a green oasis, inspired by the timeless charm of New York, Central Park, where a magnificent central tree stretches its arms to welcome you. Surrounded by smaller trees, this living canopy creates a tranquil sanctuary where you can breathe deeply and find peace. Gentle water features add a calming touch, inviting moments of reflection, recreation, and connection in this vibrant hub of life.



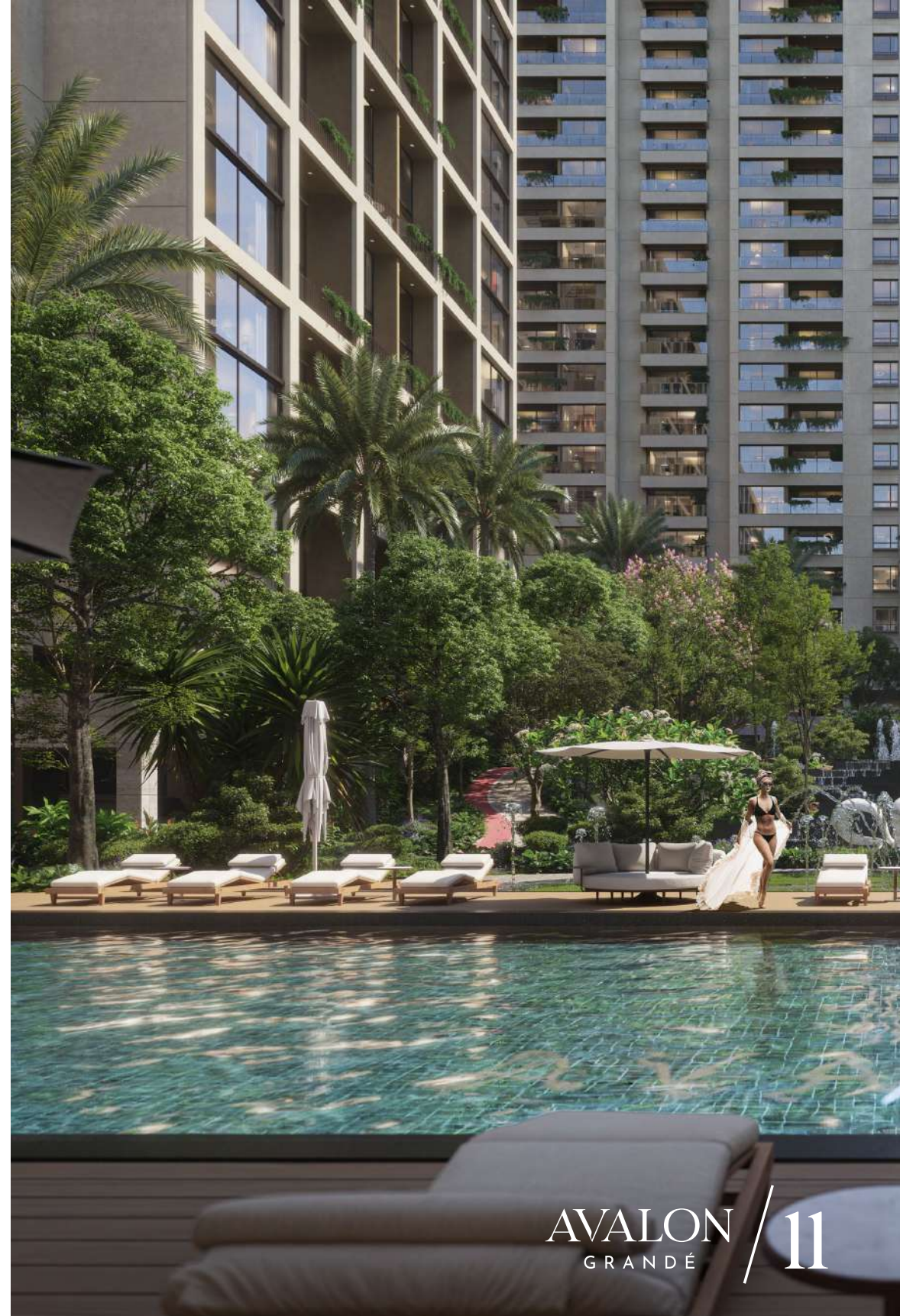




10 / AVALON
GRANDÉ

Relax and Unwind at the Avalon Square

Imagine lounging by a sparkling pool, surrounded by lush greenery and the soothing sound of water features. Avalon Square is a space to unwind, whether alone or with friends, embracing both serenity and connection. Here, tranquility and joy coexist, creating a perfect retreat for living well.







Indulge in a moment of serenity.

The Avalon Spa & Retreat is a sanctuary designed to refresh your mind, body, and soul. Imagine every moment spent here as a step toward rediscovering your best self. Letting go of stress, embracing rejuvenation, and experiencing a deep sense of well-being in a setting that feels like a dream.

Step into a dream of wellness at Avalon Grande.

where adults and children alike thrive in luxury. For adults, experience cutting-edge gyms, serene yoga and Pilates studios, and outdoor sporting grounds—each space designed to energize and rejuvenate in a tranquil, lush setting.



14

AVALON
GRANDÉ



For children, the Kids' Play Area sparks imagination with interactive equipment and safe, joyful spaces for lasting memories. Here, wellness meets wonder for the whole family, where vitality and elegance coexist in perfect harmony.



Experience the epicenter of luxury, culture, and community.

16 / AVALON GRANDÉ

AVALON TOWER

PRISM & CO

PRISM & CO

PRISM & CO

PRISM & CO

PRISM & CO



Avalon Plaza is where work, leisure, and social connection blend seamlessly. Imagine wandering through exclusive designer boutiques and curated galleries, each offering a glimpse into a world of elegance. Savoring global culinary delights in alfresco settings, as you embrace a lifestyle of indulgence.



Step into our Signature Residences

Where Dreams Find Their Home.

Designed with meticulous attention to detail, each residence at Avalon Grande is a dream brought to life. Expansive layouts, premium finishes, and breathtaking views come together to create a space that embodies the essence of biophilic living. Here, natural light floods every room, fresh air circulates freely, and harmonious colors invite tranquility and comfort.

These homes are not just spaces—they are an experience. Every corner is designed to connect you with nature, fostering peace, joy, and the true essence of living well.

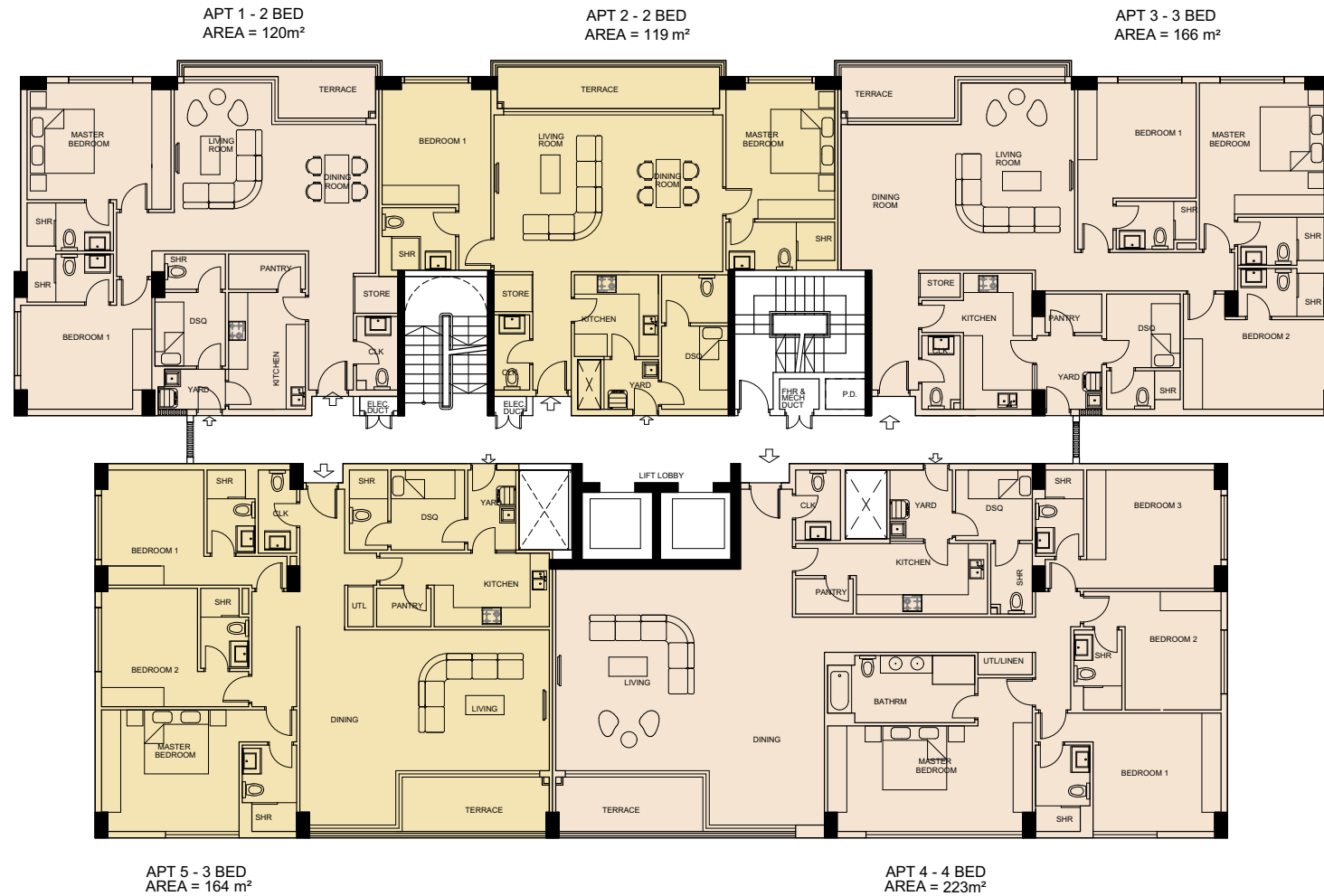
At Avalon Grande, you're not just buying a residence; you're investing in a lifestyle where nature and luxury coexist seamlessly, creating a sanctuary for the soul.





AVALON / 19
GRANDÉ

APARTMENT TYPE 1



5 UNITS/ FLOOR
APARTMENT BLOCK - TYPE 1 BLOCK 1 AND 2

GROSS TYPICAL FLOOR PLAN = 889 SQM/FLR
BLOCK AREA = 889 X 10 FLRS= 8,890 SQM
MoD COURT 1 :3No BLOCKS.

5 UNITS/ FLOOR

- 2 x 2-BED
- 2 x 3- BED
- 1 x 4- BED

GROSS AREA = 889 SQM/FLR

SALEABLE AREA = 794 SQM/FLR

APARTMENT TYPE 4

APT 1 - 2 BED
AREA = 100m²

APT 2 - 2 BED
AREA = 117 m²

APT 3 - 2 BED
AREA = 117 m²

APT 4 - 2 BED
AREA = 100m²



APARTMENT BLOCK - TYPE 4 BLOCK 9

GROSS TYPICAL FLOOR PLAN = 940 SQM/FLR

BLOCK AREA = 940 X 14 FLRS = 13,160 SQM

CDL COURT 1 CENTRAL PARK :3No BLOCKS.

CDL COURT 2 PARK SQUARE :1No BLOCK.

CDL (MoD) COURT 3 :1No BLOCK.

7 UNITS/ FLOOR

1 x 1-BED

4 x 2- BED

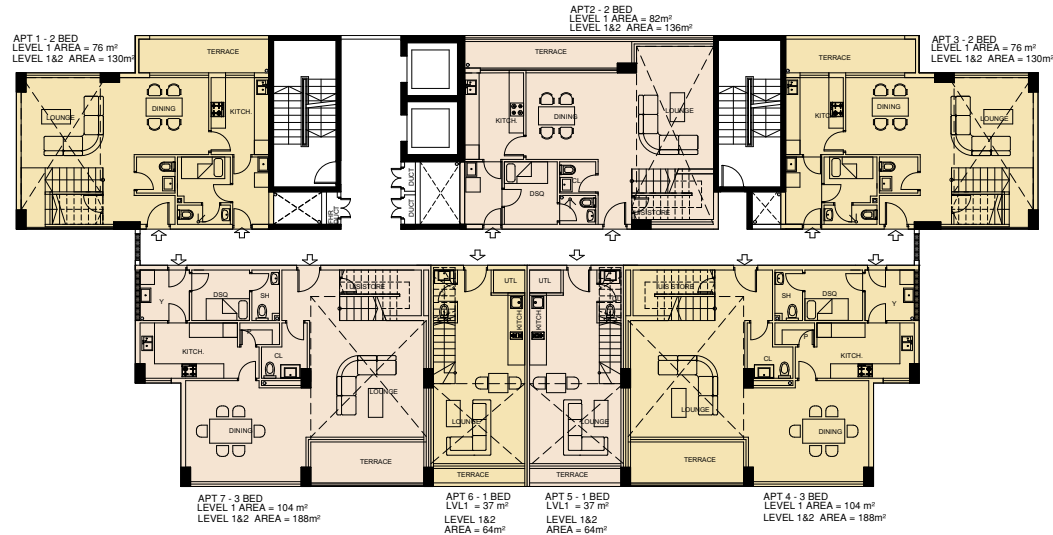
2 x 3 BED

GROSS AREA = 940 SQM/FLR
SALEABLE AREA = 876 SQM/FLR

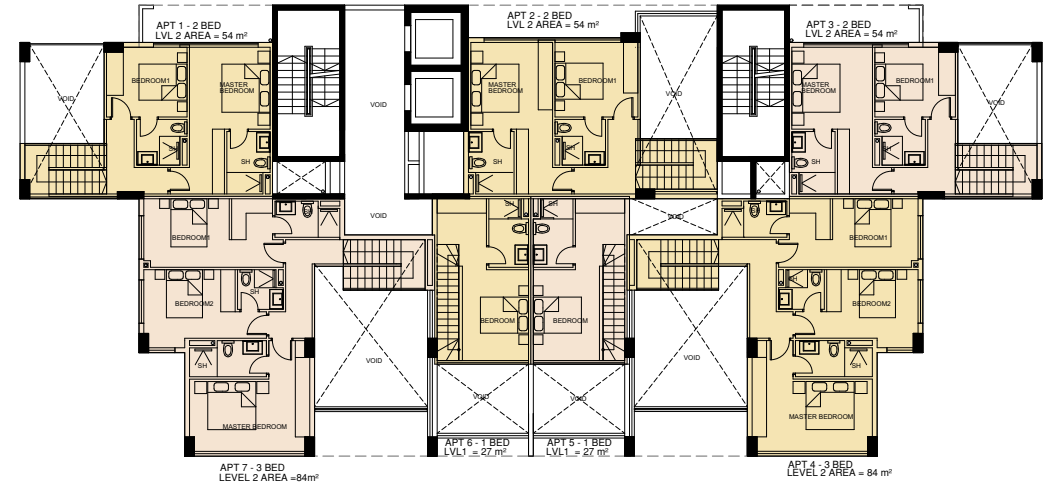


22 / AVALON
GRANDÉ

APARTMENT TYPE 5



**APARTMENTS TYPE 5
DUPLIX APT LOWER FLOOR LEVEL**



**APARTMENTS TYPE 5
DUPLIX APT UPPER FLOOR LEVEL**

The Master Plan: A Vision of Dream Living

At Avalon Grande, every detail is thoughtfully designed to create a harmonious blend of nature, luxury, and wellness. Our master plan brings this vision to life, offering expansive green spaces, serene retreats, and vibrant community areas, all seamlessly integrated into a landscape that nurtures both the body and mind.

From tree-lined boulevards to tranquil water features, every corner of Avalon Grande is crafted to invite connection—with nature, with loved ones, and with a life of refined elegance. The perfect balance of open-air spaces and sophisticated living ensures that every moment spent here is one of peace, vitality, and inspiration.

This is not just a development—it's a place where dreams find their home, where every aspect of life is elevated in perfect harmony with the environment.



Payment Terms

- 5% Booking Fee
- 10% On Signing of Sales agreement
- 65% Spread over the construction period
- 5% Payable upon completion



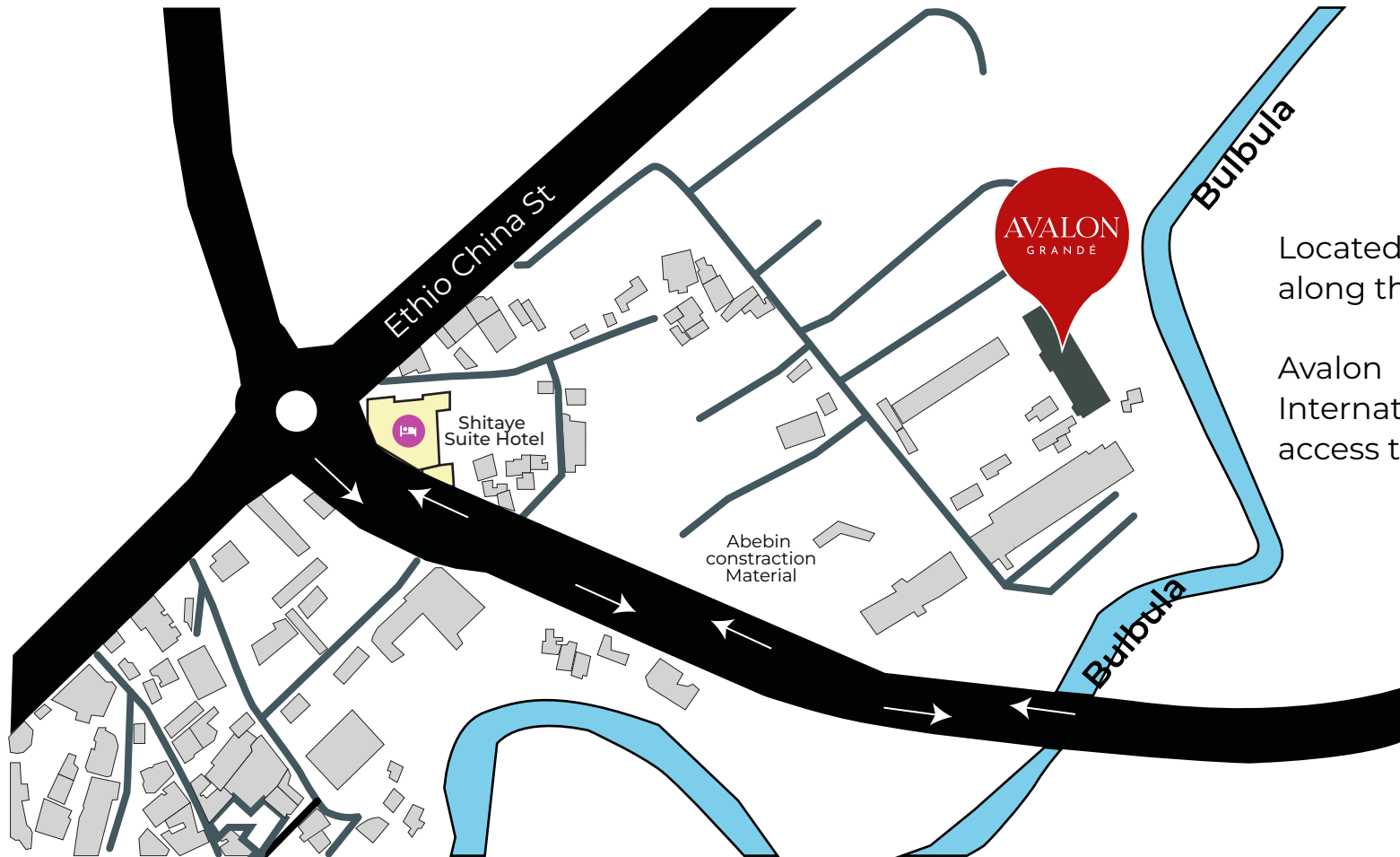
Scan to download Full Pricing
Payment Plan and Floor Plans



At Avalon Grande, every detail is thoughtfully designed to create a harmonious blend of nature, luxury, and wellness. Our master plan brings this vision to life, offering expansive green spaces, serene retreats, and vibrant community areas, all seamlessly integrated into a landscape that nurtures both the body and mind.

From tree-lined boulevards to tranquil water features, every corner of Avalon Grande is crafted to invite connection—with nature, with loved ones, and with a life of refined elegance. The perfect balance of open-air spaces and sophisticated living ensures that every moment spent here is one of peace, vitality, and inspiration.

This is not just a development—it's a place where dreams find their home, where every aspect of life is elevated in perfect harmony with the environment.



Located in Addis Ababa's vibrant Wolo Sefer area along the Ethio-China Road.

Avalon Grande is just five minutes from Bole International Airport, offering seamless travel and easy access to the city's dynamic neighborhoods.

Meet the creators

Project Contractor : Canaan Developers & TAGC
Service Engineer : EM Plan
Legal Advisory : MMA
Structural Engineer : Ngasi Consulting Engineers
Architect : BAA Architects & K2N Consultants
Previous Projects : Pavilion

Sole and Exclusive Selling Agents
Canaan Developers

CANAAN
TOWNSHIP PLC





AVALON / 29
GRANDÉ

About Canaan Developers

Established in 2015, Canaan Developers Limited is a subsidiary of CanaanEast Group of companies.

We are a Kenyan domiciled company focused on real estate development, construction and infrastructure. At Canaan Developers, we pride ourselves on delivering timely, quality and world-class projects while bringing exceptional returns to our stakeholders.

QUICK FACTS

- Operating in 6 countries
- Among the top 10 Developers in Kenya
- 1000+ Happy families



Our Other Projects

The Pavillion
Bole Addis Ababa, Ethiopia

AVALON
GRANDÉ